

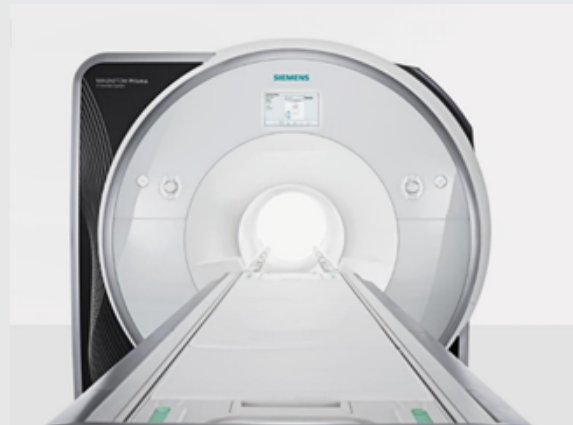
MRI - magnetic resonance imaging

■ Siemens MRI 3T Scanner MAGNETOM Prisma

MAFIL is equipped with two 3T whole-body human MRI scanners which can be used to provide in-vivo images of human body. Prisma scanners were designed for high quality research purposes. Most typical use in MAFIL is for neuroscience studies. Both of our scanners are opened for installation of customer pulse sequences and acquisition protocols. Development and compilation of new sequences can be done with IDEA environment and license. One of our scanners is equipped with multinuclear support (see available multinuclear coils).

Technical specification:

- Field strength: 3 Tesla
- Bore size: 60 cm
- System length: 213 cm
- 64 / 128 receive channels
- Magnet homogeneity at 40 cm DSV - 0.2 ppm
- Imaging FoV - 50x50x50 cm
- Zero helium boil-off technology
- High Power Shim - optional
- TimTX TrueShape
- Tim 4G + Dot
- High-power image reconstructor
- Multispectral cabinet
- Gradient strength: XR Gradients (80 mT/m and 200T/m/s simultaneously, on all axes)



Producer's web: <https://www.siemens-healthineers.com/magnetic-resonance-imaging>

■ Contacts

Multimodal and functional imaging Laboratory Core Facility

mafil.ceitec.cz

Core Facility Leader: MICHAL MIKL

michal.mikl@ceitec.cz

Technical support:

mri.mafil@ceitec.muni.cz

Location:

CEITEC MU Campus Bohunice, pavilion E35, Kamenice 5, 62500 Brno